

# DAVIS & WADDELL

## essentials

2 in 1 Electric Food Processor/Personal Blender Instruction Manual  
DES0152  
www.davisandwaddell.com.au

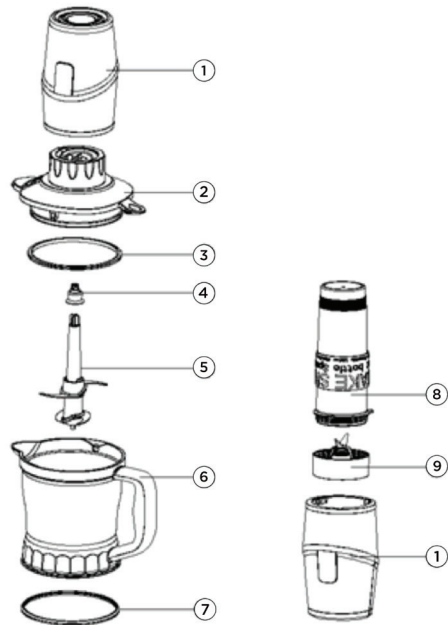
Thank you for choosing the Davis & Waddell 2 in 1 Electric Food Processor/Personal Blender. To ensure proper operation and to maintain the lifespan of your appliance, please read these instructions carefully before use.

## Features

- Versatile 2 in 1 appliance
- Food processor mixes, chops, blends and grinds up to 1.2L
- Personal blender whips up smoothies and juices
- 2 x 570ml Tritan™ bottles come with sip and seal lids
- 4 blade design, crushes ice and nuts with ease
- Quiet 500W motor
- 12 month warranty

## Parts Included

1. Motor unit
2. Lid
3. Sealing ring
4. Connector
5. Blade unit
6. Food processor bowl
7. Anti-slip ring
8. Tritan™ bottle with silicone grip
9. Blade base



## Important Safety Instructions

When using electric appliances, especially when children are present, basic safety precautions should always be followed, including the following:

- Read all the instructions before operating this appliance.
- Children should be supervised to ensure they do not play with the appliance.
- Do not immerse the motor base, plug or cord in water or any other liquid.
- Unplug the appliance when not in use or being cleaned.
- Pull out from the power outlet by grasping the plug, never by the cord.
- Always check the integrity of the cord before use, if the cord or plug is damaged do not use.
- This appliance should be kept away from hot gas, heated oven, electric burner or any hot surface.
- The appliance should always be used on a hard stable surface, such as table or benchtop.

- The appliance should always be operated with the food processor bowl or travel bottle securely in place.
- Keep hands and utensils out of the blender while blending to reduce the risk of severe injury. A scraper may be used only when the blender is not operational.
- Do not fill the food processor bowl or travel bottle above the max capacity; when blending hot liquids only fill half way.
- Do not operate the blender when empty.
- Do not store food in the food processor bowl or travel bottle.
- Do not remove the food processor bowl or travel bottle from the motor base or replace it until the motor has stopped.
- Do not use if the food processor bowl or travel bottle is cracked or chipped.
- Take care when cleaning the blender as the blades are sharp.
- This appliance is intended for household use, not commercial use.
- Store these instructions for future reference.

### **Operation Instructions**

- Clean the appliance thoroughly before use.
- Do not fill the food processor bowl or travel bottle above the max indicator, or ½ capacity when blending hot liquids.
- Do not remove the food processor bowl or travel bottle from the motor base or replace it until the motor has stopped.
- Clean and allow the base unit to cool before storing.

### **Food Processor Instructions:**

- Place the blade unit onto the pin at the centre of the food processor bowl. **CAUTION:** Take care when handling blades, do not touch blades directly.
- Add your ingredients to the bowl.
- Place the lid on the bowl.
- Place the motor unit on the lid and twist to lock into place.
- Press the switch on top of the motor unit to begin blending. To achieve best results when chopping soft ingredients (ie: onions), press the motor unit switch briefly several times over.

### **Personal Blender Instructions:**

- Add your ingredients to the travel bottle.
- Fasten the blade base to the travel bottle. **CAUTION:** Take care when handling blades, do not touch blades directly.
- Turn the bottle upside down and place on top of the motor unit.
- Press down on the motor unit to begin blending. Twist the bottle clockwise to lock into place for hands-free operation.
- Unlock the bottle from the motor unit to stop blending.

**NOTE: Do not attempt to use any utensils inside the blender cup unless the blades have fully stopped moving.**

## To Clean

- Switch off the blender and unplug.
- Whenever possible, rinse parts immediately after processing to make cleanup easier.
- Use extreme care when handling blades. Do not touch the blades with your fingers.
- Disassemble the blender: twist to remove the food processor bowl or travel bottle from the power base. Wash the food processor bowl or travel bottle with the blades and lid in warm, soapy water. Rinse and dry thoroughly. Never use rough scouring pads or abrasive cleaners as the surface may be damaged.
- The food processor bowl, travel bottle and lids are dishwasher safe.
- Wipe the motor unit with a damp cloth; do not use detergent or abrasives as these may scratch the surface.
- Do not fill the food processor bowl or travel bottle with boiling water or place any of the parts in boiling water.
- Do not allow the blender blades to soak in water for long periods of time.
- Dry thoroughly.
- Properly reassemble all parts before storing.
- Never immerse the base unit, electrical cord or plug in water.
- Allow to dry thoroughly before storing.

## Albi Guarantee

Our goods come with guarantees that cannot be excluded under the Australian Consumer Law. You are entitled to a replacement or refund for a major failure and for compensation for any other reasonably foreseeable loss or damage. You are also entitled to have the goods repaired or replaced if the goods fail to be of acceptable quality and the failure does not amount to a major failure.

The benefits of this warranty are in addition to any rights and remedies imposed by Australian State and Federal legislation that cannot be excluded. Nothing in this warranty excludes, restricts or modifies any State or Federal legislation applicable to the supply of goods which cannot be so excluded, restricted or modified.

## Guarantee

We warrant that, subject to the exclusions and limitations below, the product will be free from defects in materials and workmanship under normal domestic household use. The 12-month warranty period commences on the date of sale by the original retailer to the original purchaser. The warranty applies only while the product is owned by the original purchaser.

Use of the product in a commercial capacity will void this warranty.

If a defect appears in the product before the end of the warranty period and we find the product to be defective in materials or workmanship, we will, in our sole discretion either:

- (a) repair the Product using identical or similar components; or
- (b) replace the Product with a product comparable in quality and value.

We reserve the right to change or discontinue our product ranges at any time without notice and without liability.

## **Exclusions**

This warranty does not apply if proper care and/or usage instructions are not followed.

This warranty does not cover scratches, stains, discoloration or damage caused by misuse.

## **How To Claim**

Any claims for warranty should be made with proof of purchase and full details of the alleged defect, to the retailer from whom the product was purchased. If the retailer has closed its business, please contact us at the details below.

You must make the product available to us or our authorised repair agent for inspection. The cost of delivery of the Product to and from us for the purpose of assessment is your responsibility.

## **Limitations**

We make no express warranties or representations other than as set out in this Guarantee. The replacement of the product or the refund of the purchase price is the absolute limit of our liability under this Guarantee.

## **Contact**

Albi Imports  
87 Chifley Drive, Preston, Victoria 3072  
P: +61 (03) 9474 1300  
E: [albi@albi.com.au](mailto:albi@albi.com.au)  
[www.albi.com.au](http://www.albi.com.au)