



Instruction Manual

DLE0032BK Milk Frother & Warmer 220V~50/60Hz 400 W

Safety Instructions

Read these instructions carefully before using appliance and retain for future reference. When using electrical appliances, especially when children are present, basic safety precautions should always be followed, including

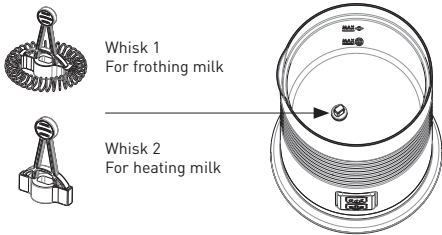
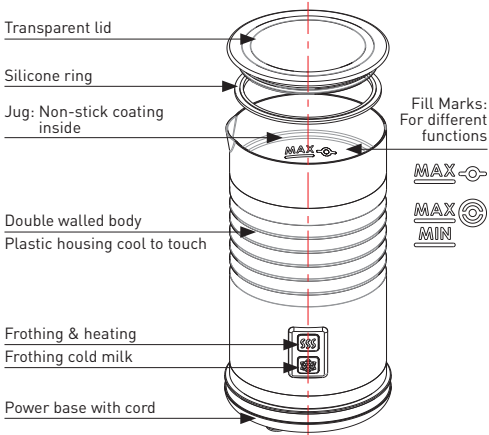
- The appliance is not intended for use by persons (including children) with reduced physical, sensory or mental capabilities, or lack of experience and knowledge, unless they have been given supervision or instruction concerning use of the appliance by a person responsible for their safety.
- Children should be supervised to ensure they do not play with the appliance and be sure to keep them away from hot milk.
- Do not immerse appliance, plug or cord in water or any other liquid.
- Do not allow cord to hang over the edge of table or benchtop.
- Switch off appliance before unplugging.
- Unplug appliance when not in use or when being cleaned.
- Pull out from power outlet by grasping the plug - do not pull the cord.
- Always check the integrity of cord before use. If cord or plug is damaged, do not use.
- Do not use an extension cord.
- Only operate appliance through a professionally installed socket.

- Do not let the cord or plug come into contact with water, oils or hot surfaces.
- Allow appliance to cool before cleaning, pulling apart or storing.
- When the appliance is in use, do not touch rotating parts or metal parts as it may cause burning or scalding.
- Do not operate without milk in the jug.
- Appliance is only designed to heat milk. Do not use with any other substance.
- Do not fill above max liquid indicator.
- Do not remove lid whilst appliance is heating milk.
- The appliance should always be used on a hard, stable surface, such as a table or bench top.
- Operate in a room temperature environment.
- This appliance is designed for household use only, not for commercial or industrial use.
- This appliance is only to be used with its intended parts, and stand provided.
- Use only fire blankets to extinguish fire on appliance.
- Prior to disposal of appliance, cut cord and take to rubbish tip.
- Do not place appliance near a hot stovetop or oven.
- Do not use appliance for anything other than its intended use.
- Do not use a damaged appliance.
- Do not disassemble other than as specified by cleaning instructions.
- Keep these instructions for future reference.
- Clean appliance before first use



Warning:

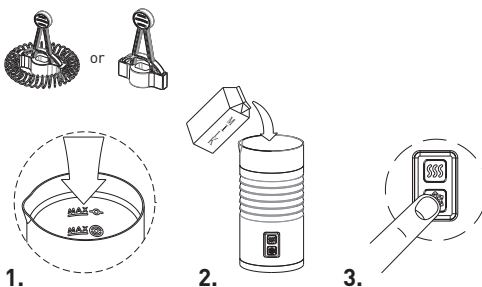
Avoid spillage on the base connector. The heating surface is subject to residual heat after use.

Know Your Frother



How To Use

Whisks	Functions	Max Capacities	Approximate Completion Time
	Frothing cold milk	115ml	60s
	Frothing & Heating	115ml	75-95s
	Heating (with a small amount of froth)	240ml	120s-140s



1. Choose the appropriate whisk and set it inside the jug. See the functions for reference.
2. Pour the milk into the jug below the chosen fill mark. See the max capacities above for reference.
3. Push the button to start the machine:
 - Frothing & Heating / Heating: Push upper button. Indicator light will illuminate. When your frother is finished, the indicator light will flash for 30 seconds.
 - Frothing cold milk: Push bottom button. Indicator light will illuminate. After 60 seconds your frother will finish working, and indicator light will flash for 30 seconds.

For best results

- Start frothing and/or heating milk while you prepare the rest of your coffee or hot chocolate.
- For best results use chilled full cream milk at approx 5-10°C.
- Cold milk can be frothed with this frother, however it appliance is not designed to keep it chilled.
- Milk heats to approximately 65+/-5°C. This is the ideal temperature for achieving the best flavor of milk, and means you don't have to wait too long until you can start sipping on your drink.
- Keep whisks in a safe place. They are small and can easily be lost.
- After frothing or heating, allow 2 minutes for the thermostat to reset and the frother to be ready for use again. To shorten this time, rinse with water and wipe dry after each use.
- The frother is designed to heat and froth milk only. Do not put coffee granules or chocolate powder into the frother. Ensure it is cleaned immediately and thoroughly after use.

Serving Suggestions

With Frothed Milk



Cappuccino

1 part espresso
Add 2 parts frothed milk
Top with cocoa powder.

Macchiato

Spoon frothed milk on top of an espresso.

Frothy Coffee Milkshake

Make 1 part espresso - allow to cool
Add 2 parts frothed cold milk.

With Hot Milk



Flat White

1 part espresso shot
Add 2 parts heated milk and stir.

Hot Chocolate

Pour heated milk in to a large mug
Add chocolate powder and stir to mix.

Instant Milky Coffee

Place instant coffee granules in a cup
Add hot milk and stir to mix.

Care

- Do not immerse in water and do not use any detergents. Wipe the base with a damp cloth or towel.
- Clean the jug and inserts by carefully rinsing out with water.
- Not dishwasher safe
- Do not leave the appliance in a damp or steamy environment
- This appliance is operated by an electric motor. There is no need to use lubrication for any moving parts, motor, bearings or sharpening surfaces.

Our 12 month Guarantee

Our goods come with guarantees that cannot be excluded under the Australian Consumer Law. You are entitled to a replacement or refund for a major failure and compensation for any other reasonably foreseeable loss or damage. You are also entitled to have the goods repaired if the goods fail to be of acceptable quality and the failure does not amount to a major failure.

We stand by this product. Therefore we offer a 12 month guarantee on the heating element. The benefits of this guarantee are in addition to any rights and remedies imposed by Australian Consumer Law. Our guarantee excludes normal wear and tear and instances where care and use instructions have not been followed.

What Albi will do: During this guarantee period Albi will repair, replace or refund any defective product. If identical product is not available for replacement, a similar product may be offered. Albi asks you to cover the cost of postage/transit if the product needs to be sent back to us for inspection. If Albi deems the product is defective, we will reimburse your postage/transit expenses. Albi will be responsible for the postage/transit of the repaired/replacement product back to you.

What to do: If a fault/defect is identified cease using the product immediately.

To make a claim on this guarantee, take the product, proof of purchase and full details of the alleged defect to the retailer from whom the product was purchased. If you cannot access the retailer or are unsatisfied with the solution offered by the retailer contact Albi via the details below.

Albi

87 Chifley Drive, Preston, Victoria 3072

P: +61 (03) 9474 1300

E: albi@albi.com.au

www.albi.com.au