

# DAVIS & WADDELL

## essentials

electric milk

frother & warmer



DLE0032ST

220V-50/60HZ 400 W

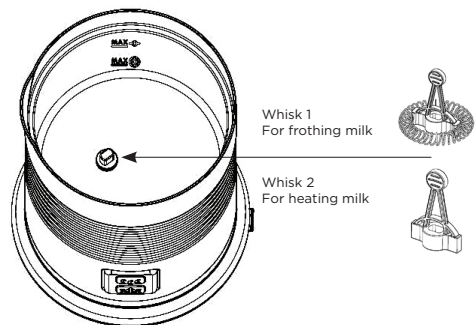
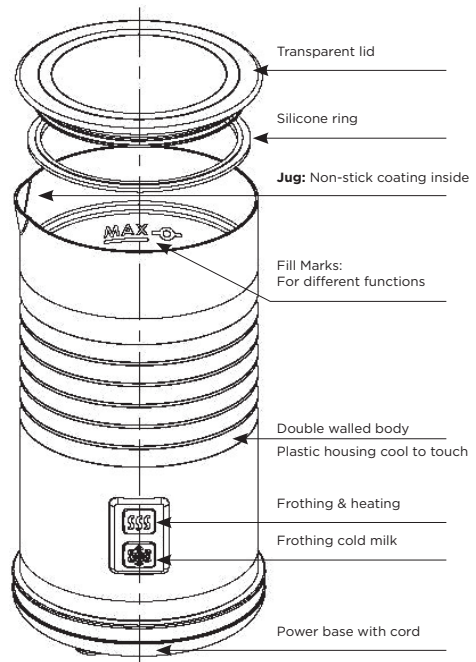
## INSTRUCTION MANUAL

## Safety Instructions



**Read these instructions carefully before using appliance and retain for future reference. When using electrical appliances, especially when children are present, basic safety precautions should always be followed, including**

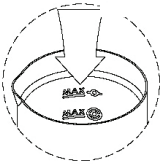
- The appliance is not intended for use by persons (including children) with reduced physical, sensory or mental capabilities, or lack of experience and knowledge, unless they have been given supervision or instruction concerning use of the appliance by a person responsible for their safety.
- Children should be supervised to ensure they do not play with the appliance and be sure to keep them away from hot milk.
- Do not immerse appliance, plug or cord in water or any other liquid.
- Do not allow cord to hang over the edge of table or benchtop.
- Switch off appliance before unplugging.
- Unplug appliance when not in use or when being cleaned.
- Pull out from power outlet by grasping the plug - do not pull the cord.
- Always check the integrity of cord before use. If cord or plug is damaged, do not use.
- Do not use an extension cord.
- Only operate appliance through a professionally installed socket.
- Do not let the cord or plug come into contact with water, oils or hot surfaces.
- Allow appliance to cool before cleaning, pulling apart or storing.
- When the appliance is in use, do not touch rotating parts or metal parts as it may cause burning or scalding.
- Do not operate without milk in the jug.
- Appliance is only designed to heat milk. Do not use with any other substance.
- Do not fill above max liquid indicator.
- Do not remove lid whilst appliance is heating milk.
- The appliance should always be used on a hard, stable surface, such as a table or bench top.
- Operate in a room temperature environment.
- This appliance is designed for household use only, not for commercial or industrial use.
- This appliance is only to be used with the its intended parts and stand provided.
- Use only fire blankets to extinguish fire on appliance.

- Prior to disposal of appliance, cut cord and take to rubbish tip.
- Do not place appliance near a hot stovetop or oven.
- Do not use appliance for anything other than its intended use.
- Do not use a damaged appliance.
- Do not disassemble other than as specified by cleaning instructions.
- Keep these instructions for future reference.
- Clean appliance before first use

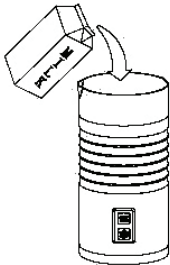


## How to use

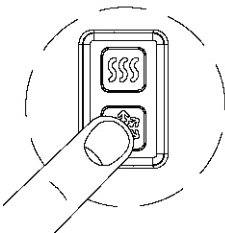
Whisks	Functions	Max capacities	Approximate completion time
	Frothing cold milk	115ml	60s
	Frothing & Heating	115ml	75-95s
	Heating (with a small amount of froth)	240ml	120s-140s



1. Choose the appropriate whisk and set it inside the jug. See the functions for reference.



2. Pour the milk into the jug below the chosen fill mark. See the max capacities above for reference.



3. Push the button to start the machine:

- Frothing & Heating / Heating: Push upper button. Indicator light will illuminate. When your frother is finished, the indicator light will flash for 30 seconds.

- Frothing cold milk: Push bottom button. Indicator light will illuminate. After 60 seconds your frother will finish working, and indicator light will flash for 30 seconds.

## For best results

- Start frothing and/or heating milk while you prepare the rest of your coffee or hot chocolate.
- For best results use chilled full cream milk at approx 5-10°C.
- Cold milk can be frothed with this frother, however it appliance is not designed to keep it chilled.
- Milk heats to approximately 65+/-5°C. This is the ideal temperature for achieving the best flavor of milk, and means you don't have to wait too long until you can start sipping on your drink.
- Keep whisks in a safe place. They are small and can easily be lost.
- After frothing or heating, allow 2 minutes for the thermostat to reset and the frother to be ready for use again. To shorten this time, rinse with water and wipe dry after each use.
- The frother is designed to heat and froth milk only. Do not put coffee granules or chocolate powder into the frother. Ensure it is cleaned immediately and thoroughly after use.

## Serving suggestions



### With frothed milk

#### Cappuccino

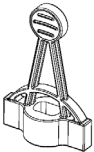
1 part espresso  
Add 2 parts frothed milk  
Top with cocoa powder.

#### Macchiato

Spoon frothed milk on top  
of an espresso.

#### Frothy Coffee Milkshake

Make 1 part espresso -  
allow to cool  
Add 2 parts frothed cold milk.



### With hot milk

#### Flat white

1 part espresso shot  
Add 2 parts heated milk and stir.

#### Hot Chocolate

Pour heated milk in to a large mug  
Add chocolate powder and stir to mix.

#### Instant milky coffee

Place instant coffee granules in a cup  
Add hot milk and stir to mix.

## Care

- Do not immerse in water and do not use any detergents. Wipe the base with a damp cloth or towel.
- Clean the jug and inserts by carefully rinsing out with water.
- Not dishwasher safe
- Do not leave the appliance in a damp or steamy environment
- This appliance is operated by an electric motor. There is no need to use lubrication for any moving parts, motor, bearings or sharpening surfaces.

## Warning:

Avoid spillage on the base connector.  
The heating surface is subject to residual heat after use.

## Guarantee

If after following these instructions the appliance does not work, there may be a manufacturing problem. If this is the case, Albi guarantees this product for 1 year from the date of purchase. The full details of this guarantee can be found at [www.albi.com.au](http://www.albi.com.au) or by calling (03) 9474 1300. In the event of such a problem you should return it to the place from which you bought it, WITH PROOF OF PURCHASE, in the form of a valid receipt. Damage through misuse will nullify this guarantee.

## For any other advice please contact:

Customer Service

Albi

87 Chifley Drive,  
Preston Vic 3072

Phone: 03 9474 1300  
Email: [albi@albi.com.au](mailto:albi@albi.com.au)