

Leaf+Bean

Electric Espresso Maker

DLE0073

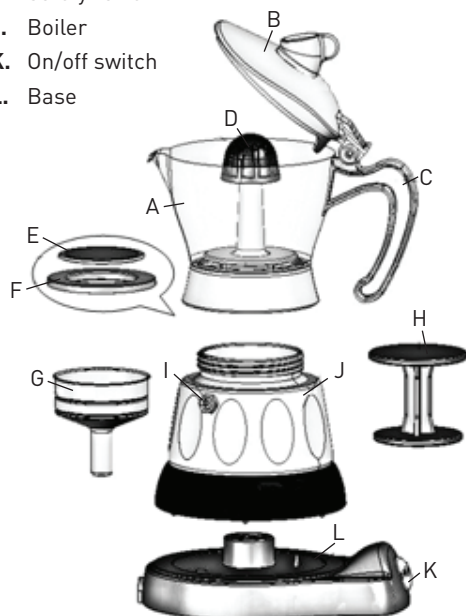
Instruction Manual

Thank you for choosing the Leaf & Bean Electric Coffee Maker.

To ensure proper operation and to maintain the lifespan of your appliance, please read these instructions carefully before use.

Features and Parts

- A. Jug
- B. Lid
- C. Handle
- D. Cap
- E. Disk filter
- F. Gasket
- G. Funnel
- H. Tamper
- I. Safety valve
- J. Boiler
- K. On/off switch
- L. Base



Safety First

- This appliance is not intended for use by persons (including children) with reduced physical, sensory or mental capabilities, or lack of experience and knowledge, unless they have been given supervision or instruction concerning use of the appliance by a person responsible for their safety.
- This machine has been manufactured to “make coffee”. Never use other extracts, cocoa powder, tea leaves, other infusions or soluble substances: these may block the holes in the filter.
- This appliance is intended to be used in household and similar applications such as:
 - Staff kitchen areas in shops, offices and other working environments
 - By clients in hotels, motels and other residential type environments;
 - Bed and breakfast type environments.
- Children should be supervised to ensure that they do not play with the appliance.
- The appliance is only to be used with the base provided.
- When using the appliance, do not pour water into jug and avoid spillage on the connector. Fill the boiler with water before placing the coffee maker on the support base.
- During cleaning, never immerse the base and the boiler in water: this is an electrical appliance.
- Be careful to avoid being scalded by spraying water or steam.
- When using the appliance do not touch hot surfaces. Use the buttons and handles.
- Never use jug or any other part of the appliance directly on flames or cooktops.
- Never touch the appliance with wet or damp hands.
- In the event of faults or malfunctioning of the appliance, switch it off and cease use.
- If the supply cord is damaged, it must be replaced by the manufacturer, its service agent or similarly qualified persons in order to avoid a hazard.

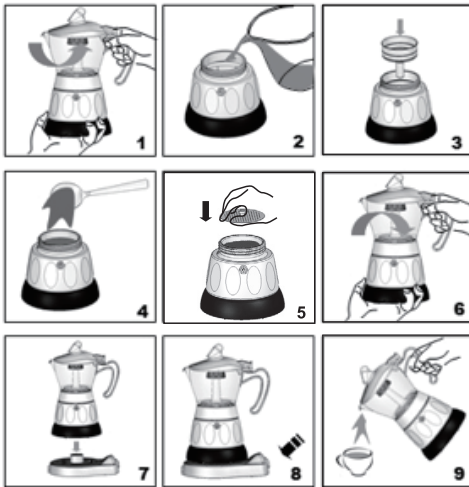
Packaging and Recycling

- The materials used for this product’s packaging can be reused, recycled and disposed of through specific waste streams.

- **REUSE:** Keep packaging to safely store or transport your product, preventing damage.
- **RECYCLE:** Look for recycling symbols on packaging components to identify if they are recyclable. Check with your local authority to find out what materials are accepted for recycling in your area.
- **DISPOSE:** Look for symbols on packaging components and dispose of materials accordingly.

Operating your Electric Coffee Maker Before First Use

The first time that the coffee maker is used, wash the accessories by following the “Care” section.



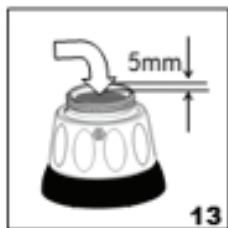
Making Coffee

1. Check that the coffee maker is cold. Unscrew by holding the boiler with one hand and turning the jug anticlockwise with the other (Fig.1).
2. Remove funnel and fill boiler with cool fresh water until it reaches the safety valve (visible inside the boiler), without exceeding this level (Fig.2).
Important: Do not operate the coffee maker without water in the boiler. Only use cool or tepid water.
3. Insert funnel into boiler. (Fig. 3).

4. Fill funnel with ground coffee. (Fig.4)
Important: Use good quality, medium-ground coffee. Do not use instant coffee.
5. Take tamper and press the ground coffee firmly. (Fig. 5).
6. TIP: make sure the coffee is under the funnel edge 4-6mm. (Fig. 12).
7. Tighten the coffee maker securely, by holding the boiler with one hand and turning the jug clockwise with the other. (Fig. 6). Take care not to push handle.
8. Place coffee maker onto base (Fig. 7). Close lid.
9. Press on/off switch (Fig. 8)
10. The coffee will start to percolate into the jug after a few minutes. Appliance will make a “Click” sound and automatically shut off, or press the On/off switch to manually stop.
11. Enjoy your espresso coffee. (Fig. 9)

Care

- Before cleaning, wait 5 minutes until the coffee maker has cooled down after use. Unplug appliance.
- Thoroughly rinse interior of boiler (including lid and cap) with warm or cool water.
- Dry with a cloth. Hand wash funnel, disk filter and tamper. Dry thoroughly. Other parts can be wiped down a cloth, avoiding the centre of the base.
- Regularly check the funnel and the gasket. Replace if there are signs of wear or deterioration.
- After each use, clean the rinse the disk filter. (Fig. 10)
- Do not wash the coffee maker in the dishwasher.
- When cleaning do not use solvents or abrasive detergents. Simply clean it with a sponge, keeping attention not to wet the electrical parts. (Fig. 11)
- Never rinse outside of boiler under tap water and never immerse it in water. (Fig. 12)



Our 12 month Guarantee

Our goods come with guarantees that cannot be excluded under the Australian Consumer Law. You are entitled to a replacement or refund for a major failure and compensation for any other reasonably foreseeable loss or damage. You are also entitled to have the goods repaired if the goods fail to be of acceptable quality and the failure does not amount to a major failure.

We stand by this product. Therefore we offer a 12 month guarantee on the heating element. The benefits of this guarantee are in addition to any rights and remedies imposed by Australian Consumer Law. Our guarantee excludes normal wear and tear and instances where care and use instructions have not been followed.

What IsAlbi will do: During this guarantee period IsAlbi will repair, replace or refund any defective product. If identical product is not available for replacement, a similar product may be offered. IsAlbi asks you to cover the cost of postage/transit if the product needs to be sent back to us for inspection. If IsAlbi deems the product is defective, we will reimburse your postage/transit expenses. IsAlbi will be responsible for the postage/transit of the repaired/replacement product back to you.

What to do: If a fault/defect is identified cease using the product immediately.

To make a claim on this guarantee, take the product, proof of purchase and full details of the alleged defect to the retailer from whom the product was purchased. If you cannot access the retailer or are unsatisfied with the solution offered by the retailer contact IsAlbi via the details below.

IsAlbi
87 Chifley Drive, Preston, Victoria 3072
P: +61 (03) 9474 1300
E: enquiries@isalbi.com.au
www.isalbi.com.au

Troubleshooting

Problem	Cause	Solution
No coffee is released	No water in boiler	Fill boiler with fresh water (remove from base to fill).
Coffee takes a long time to be released	Coffee used is not correct type The disk filter is blocked	Use ground coffee suitable for coffee makers Clean disk filter (follow "Care " section).
Coffee leaks from edges of boiler	Disk filter is blocked Gasket is burned or torn	Clean the disk filter as described in "Care" section Replace gasket.
Coffee crema disappears quickly	Upper container is blocked	Use the clean water only to brew the coffee once a week (no coffee powder). Use appliance without any coffee grounds to flush out old coffee residues and then brew coffee again.