

# MASTERPRO

PREMIUM QUALITY

## XL 3.8L SMART FOOD WASTE DISPOSAL

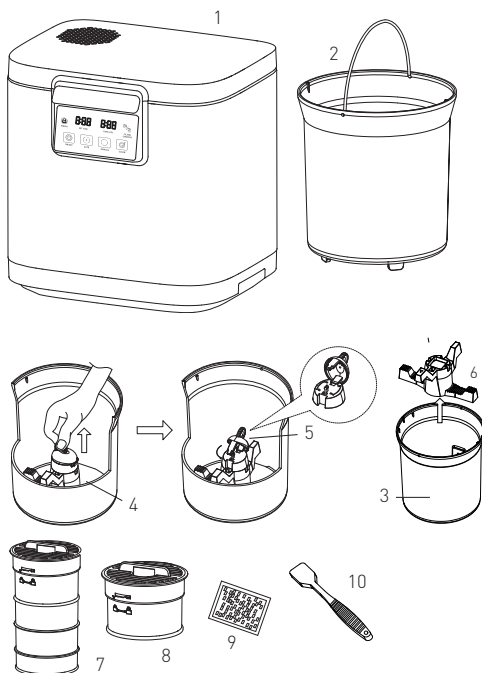
F5100252

Thank you for choosing the MasterPro XL 3.8L Smart Food Waste Disposal. To ensure proper operation and to maintain the lifespan of your appliance, please read these instructions carefully before use.

### PRODUCT OVERVIEW

#### Main Appliance Components

1. Main unit
2. Kitchen waste bucket

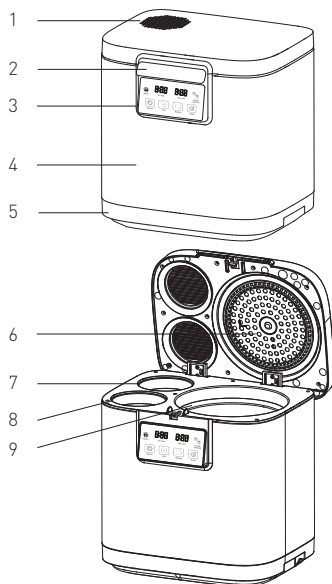


3. Detachable mixing paddle
4. Mixing assembly shaft
5. Mixing paddle lock
6. Mixing blades
7. Large charcoal filter
8. Small charcoal filter
9. Activated charcoal pellets
10. Cleaning brush

This appliance uses a dual air filtration system with dual charcoal filters provided. Adjust the number of pellets in each filter depending on the amount of waste and gases produced.

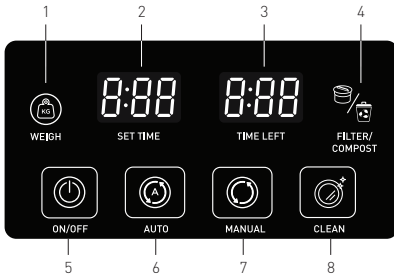
#### Main Appliance Parts

1. Exhaust Vent
2. Lid handle
3. Control panel
4. Outer body (can be removed)
5. Base
6. Stage one filter
7. Filter cavity for large charcoal filter
8. Filter cavity for small charcoal filter
9. Cavity for kitchen waste bucket



## Control Panel Overview

1. Auto weigh indicator
2. Set time display
3. Time left display
4. Filter replacement reminder/compost indicator
5. Power
6. Automatic mode button
7. Manual mode button
8. Self-clean button



## IMPORTANT SAFETY INSTRUCTIONS

Read all instructions before operating this appliance and retain these instructions for further reference.

- This appliance is for indoor household use only.
- Turn off the appliance and disconnect it from the power supply before changing accessories or handling parts that move during use.
- Do not immerse the power cord, plug, or appliance in water or place it under the tap during cleaning to avoid damage or electric shock.
- Always check the integrity of the cord, plug and appliance before use. If the cord, plug, or appliance is damaged, return appliance to a qualified professional.
- Do not plug or unplug the appliance or operate the control panel with wet hands.
- Make sure output voltage corresponds to the voltage stated on the rating label of the appliance.
- Do not use an extension cord to operate this appliance.
- Always place this appliance on a hard and stable surface, such as a table or benchtop.
- Do not use this appliance for anything other than its intended use.
- This appliance is not to be used by persons (including children) with reduced physical, sensory, or mental capabilities, or lack of experience and knowledge, unless they have been given supervision or instruction.
- Children should be supervised around this appliance while in use.
- Do not allow children to play with the appliance.
- Do not allow the cord to touch hot surfaces or spill water on the cord.
- Switch off and unplug the appliance when not in use or before cleaning. Unplug appliance by grasping on the plug. Do not pull the cord.
- To avoid hazards, do not attempt to repair, modify, or dissemble this appliance.
- Do not operate or store appliance in temperatures below freezing.
- Do not place anything on the top of the appliance or block the exhaust vent. Always ensure the appliance is surrounded by adequate ventilation.
- Make sure the surface of the appliance is free of debris when opening and closing the lid.
- The appliance will become hot during operation. Do not touch hot surfaces when appliance is running. Allow appliance to cool and use only the lid handle to move.
- Once appliance has begun to run it will become very hot internally. Do not stop the appliance and touch the kitchen waste bucket. Once appliance has finished running wait to cool down before disassembling to clean.
- If you must handle the bucket immediately after the machine has run, we recommend using a kitchen mitt as kitchen waste bucket will be very hot.
- Avoid touching moving parts while still in operation.
- Do not attempt to bypass any safety locking mechanisms of the appliance.
- This appliance is not designed to be operated using an external timer or a separate remote-control system.
- Ensure mixing paddle lock is securely fastened to mixing paddle lock seat before use, failure to lock in the grinding mechanism will result in internal damage to the appliance.

- Do not overfill kitchen waste bucket or residue will stick to the stage one filter and may become difficult to remove and affect performance.
- Take care to ensure that no food waste falls outside of the kitchen waste bucket and into the kitchen waste bucket cavity.

## PACKAGING AND RECYCLING

The materials used for this product's packaging can be reused, recycled, and disposed of through specific waste streams.

- **REUSE:** Keep packaging to safely store or transport your appliance, preventing damage.
- **RECYCLE:** Look for recycling symbols on packaging components to identify if they are recyclable. Check with your local authority to find out what materials are accepted for recycling in your area.
- **DISPOSE:** Look for symbols on packaging components and dispose of materials accordingly.

## TECHNICAL INFORMATION

Power supply	220-240V~, 50-60Hz
Input Power	500W
Food waste capacity	3.8L

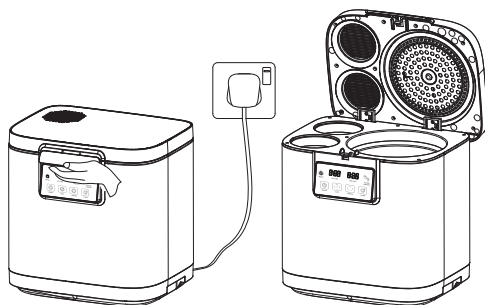
## FEATURES

- This must-have kitchen solution uses intelligent composting technology to easily convert food scraps and organic waste into useful compost.
- The dual air filtration system with charcoal filters eliminates unpleasant odours and keeps your kitchen clean and beautiful.
- Includes auto-weigh and self-cleaning functions for added convenience.
- 6-blade grinder system is detachable, making cleaning a breeze.

## OPERATING INSTRUCTIONS

- Before each use ensure mixing paddle lock is securely fastened to mixing paddle lock seat before use, failure to lock in the grinding mechanism will result in internal damage to the appliance.

1. Connect appliance to power supply. Open lid by gently pulling the locking handle upwards.

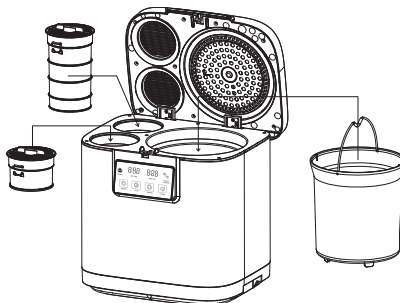


2. Take out each charcoal filter and use the handle at top to twist anticlockwise to open. Fill each filter with required number of charcoal pellets (total should not exceed 500g for both) and fasten the lid by replacing and turning clockwise.

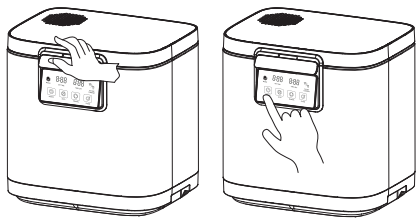


3. Put both charcoal filters and the kitchen waste bucket back in their respective cavities in the main unit. Gently rotate the bucket to the left or right until you hear a click sound and it falls into place.

**Note:** one bag (500g) of charcoal is just enough to fill both the small filter and large filter. For the small filter box, it can fill about 130g of charcoal, and for the big filter box, it can fill about 340g.




- Fill the bucket with waste to be composted, ensuring you do not over fill, so it hits the top of the stage one filter in the lid. Close the lid and lock the handle in place with a click sound. Press the power button to switch on appliance. Allow up to 3 seconds for the appliance to start up.



- Select desired composting mode by pressing the Auto or Manual button. The display will light up with the set time and remaining time.
- Auto mode: composter automatically determines running time (4–6 hours) depending on weight of waste in basket.

Food waste weight	Running time
Up to 400g	4 hours
400–800g	5 hours
Over 800g	6 hours

When Auto mode is selected, the Compost light will begin flashing  while the composter weighs the basket and will go out once time is selected.

- Manual mode:** manually determine running time by repeatedly pressing Manual (1–3 hours)
- Once time has been using either manual mode or auto mode, press the power button

again to start running the composter. The time left display will begin counting down. Once it reaches zero, appliance will beep and enter standby mode. The treated waste is ready to use.  
**Note:** foods that are high and starch and water content may need to be set for an additional period of time using the manual setting to get the desired consistency. Output of the process should be a dry, crispy dirt, if this consistency has not been achieved at the end of run time select additional time using manual mode.

- Once the food waste has been treated in a single cycle, it can be safely disposed in your organic waste bin or stored in a sealed bag to make compost using the **compost method**.  
**Caution:** Kitchen waste bucket will be hot after composting. Allow to cool before removing from main unit.

### COMPOST METHOD

- Add 400g water into 800g of treated food waste (or 50% of total waste volume)
- Press Auto to start composting for 3 hours.
- Once operation is finished, add required composting agents (microorganisms or worms) to the waste to let it mature. This process takes about 12 hours.
- Once compost has been cured, store it in a sealed bag for up to 1 week. To plant seedlings, mix compost with soil in a 1:10 ratio before planting to avoid root burning.



### COMPOSTABLE INGREDIENTS GUIDE

Add directly to bucket	Add to bucket after cutting to smaller pieces (about 5cm)	Add to bucket in small amounts (not more than 60g)	Not suitable for composting
Vegetable leaves	Whole corn or corn husk	Starchy foods, potato, bread, breadcrumbs, other baked goods	Hard bones
Fruit and potato peels	Whole celery, capsicum	Cooked rice	Cooking oil and hot liquids
Fish, fish bones, small chicken bones	Whole carrots	Almonds, walnuts and other nuts	Large pieces of frozen foods
Eggs, eggshells	Dead flowers, plants, large leaves	Spaghetti	Confectionery

Add directly to bucket	Add to bucket after cutting to smaller pieces (about 5cm)	Add to bucket in small amounts (not more than 60g)	Not suitable for composting
Coffee grounds, tea leaves	Cucumbers	Jams, jellies and salads	Sticky or gooey foods (including chewing gum)
Legumes	Zucchini	Garlic cloves, ginger pieces	Coffee capsules
Weeds, dead leaves	Onions, potatoes, whole root vegetables	Chocolate chips or chunks	Whole spices with tough shells (nutmeg, cinnamon sticks etc)
Fibrous plants i.e. wheat, rice, maize	Apples, pears, whole fruits	Corn kernels	
Celery	Whole tomatoes	Dairy products	
Fruit and vegetable scraps		Sunflower seeds, pumpkin seeds, other types of seeds	
Whole chillies		Parsley, coriander and other herbs	
Prawns and other shellfish		Dates, apricots and other dried fruits	


## TIPS

- To ensure best results, it is recommended to mix a variety of food types in each composting cycle. Greasy, hard-to-digest ingredients are best mixed with lighter, drier ingredients.
- Output of the process should be a dry, crispy dirt, if this consistency has not been achieved at the end of run time select additional time using manual mode.
- Foods that are high and starch, dense and moisture-rich may need to be set for an additional period of time using the manual setting to get the desired consistency.
- Please avoid adding large quantities of the following alone:
  - Starch (bread, cakes, rice, noodles, mashed potatoes, stuffing)
  - Condiments, dressings, sauces and large amounts of grease
  - Citrus fruit rinds
  - High sugar fruits (grapes, cherries, oranges, bananas)
  - Nut butters, jellies
- Large quantities of dense, moisture-rich and starchy, these foods tend to solidify and stick to the mixing paddle of the waste bucket, these can be processed but in small quantities.
- When processing food waste that is high in starches and sugar, sauces or fatty food waste, be sure to mix them with other food waste. If these types of food waste are processed without mixing, there is a chance that the end product may become stuck to the bottom of the bucket and fail to process entirely.
- If your end product comes out less than optimal, simply add more food waste and start the cycle again.
- If the mixing paddle is stuck, the appliance will stop running and switch to self-preservation mode (error code will be displayed). Remove the bucket and remove the blockage manually, soaking the bucket overnight in warm soapy water. Do not use metal tools or wire brushes to clear out the blockage.

- Do NOT attempt to treat non-organic waste (including glass, metal, and wood) with this appliance.
- Do not add large pork or beef bones, candy or chewing gum; these materials may overload the motor and seriously damage the appliance.
- Do not add cooking oil or other flammable materials. This may damage the appliance while running.
- It is normal for the appliance to emit knocking sounds while running; these are produced by chopping up stems or other particularly hard food waste.
- It is normal to have some condensation after running the machine, the stage one filter will filter access moisture and it will condensate here.
- This appliance uses a dual air filtration system with dual charcoal filters provided. Adjust the number of pellets in each filter depending on the amount of waste and gases produced.

## CARE INSTRUCTIONS

### CHARCOAL FILTER REPLACEMENT

- If the Filter  light is flashing, it means the charcoal pellets inside the filters need to be changed. It is recommended to replace the charcoal every 3 months for more effective filtration.
- Remove the charcoal filters from their cavities and unscrew lids. Dispose of the used charcoal and replace it with new pellets, replace the lids and load the filters back into the unit. Press and hold the Filter light and it will go out.

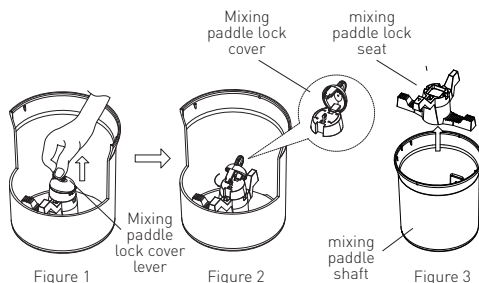
### SELF-CLEANING FUNCTION

1. Fill the waste bucket with water up to one-thirds full, close the lid and press the Clean button. Water will be automatically heated and circulated to clean the bucket.
2. Once cleaning is finished and appliance beeps, allow the bucket to cool before emptying the water.
3. If the composter lid is opened midway through operation, it will stop running and both displays will show OPEN. Close the lid to resume running.

4. Once complete allow to cool completely and wipe dry with a tea towel or dry cloth. Do not use soap during this process. Do not use abrasive scourers as it will damage the non-stick ceramic coating on the inside of the bucket.
5. Wipe the outer body, inside of lid and filter regularly with a damp cloth. Keeping the filter clean allows for more efficient odour filtration.  
**Caution:** Do NOT submerge appliance in water.
6. After cleaning, allow to dry completely and store appliance in a clean, dry and well-ventilated area.  
**Note:** The self-cleaning feature can be used to remove any food residue that sticks to the bottom of the bucket after composting.

## MANUAL CLEANING AND STORAGE

1. Unplug appliance and allow to cool completely before removing the kitchen waste bucket from its cavity.
2. Wipe the outer body, inside of lid and filter regularly with a damp cloth. Keeping the filter clean allows for more efficient odour filtration.  
**Caution:** Do NOT submerge appliance in water.
3. Lift the top lever of the mixing paddle lock cover firmly to detach it from the mixing paddle lock seat (Figure 1).
4. Rotate the mixing paddle lock cover 90 degrees to the left to loosen it from the mixing paddle lock seat. Once you hear a click, remove the mixing paddle lock cover (Figure 2).



5. After removing the mixing paddle lock cover, the mixing paddle lock seat can be detached from the mixing paddle shaft and taken out of the bucket (Figure 3).
6. Clean the paddle parts, mixing blades and bucket separately with warm water and a mild detergent and cleaning brush provided. Do not use abrasive scourers as it will damage the non-stick ceramic coating on the inside of the bucket.
7. After cleaning, reinstall the mixing paddle lock seat by aligning the square cutout and triangle symbols on the paddle with those at the bottom of the bucket. Then, place the mixing paddle lock cover on top. Turn the mixing paddle lock cover 90 degrees to the right and firmly press the lever of the mixing paddle lock cover back into the mixing paddle lock seat. When a click sound is heard, the paddle is securely locked back into place. (Figure 4 & 5).

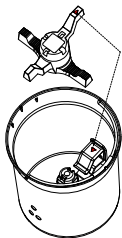


Figure 4



Figure 5

**Note:** Use the above method only when necessary to remove stubborn residue stuck in the paddle. For all other residue, use the self-cleaning function or the cleaning brush provided.

Ensure mixing paddle lock cover is securely fastened to mixing paddle lock seat before use, failure to lock in the grinding mechanism will result in internal damage to the appliance.

8. After cleaning, allow to dry completely and store appliance in a clean, dry and well-ventilated area.

## Product Disposal

This product is not to be disposed of together with household general waste. Contact your local city council for advice on authorized disposal locations suitable for electric and electronic waste.

## OUR 12-MONTH GUARANTEE

In Australia, our goods come with guarantees that cannot be excluded under the Australian Consumer Law. You are entitled to a replacement or refund for a major failure and compensation for any other reasonably foreseeable losses or damage. You are also entitled to have the goods repaired if the goods fail to be of acceptable quality and the failure does not amount to a major failure.

We stand by this product and therefore, we offer a 12-month guarantee. The benefits of this guarantee are in addition to any rights and remedies imposed by the Australian Consumer Law. Our guarantee excludes normal wear and tear and instances where care and use instructions have not been followed.

**What IsAlbi will do:** During this guarantee period, IsAlbi will repair, replace, or refund any defective product. If identical product is not available for replacement, a similar product may be offered. IsAlbi asks you to cover the cost of postage/transit if the product needs to be sent back to us for inspection. If IsAlbi deems the product is defective, we will reimburse your postage/transit expenses. IsAlbi will be responsible for the postage/transit of the repaired/replacement product back to you.

**What to do:** If a fault/defect is identified, cease using the product immediately. To make a claim on this guarantee, take the product, proof of purchase, and full details of the alleged defect to the retailer from whom the product was purchased. If you cannot access the retailer or are unsatisfied with the solution offered by the retailer, contact IsAlbi via the details below.

## ISALBI

87 Chifley Drive, Preston, Victoria 3072

P: +61 (03) 9474 1300

E: [enquiries@isalbi.com.au](mailto:enquiries@isalbi.com.au)

[isalbi.com.au](http://isalbi.com.au)